

Welcome to Mrs. Whillock's Sixth Grade Science Classroom 325

SCIENCE is DOING!!

**Engage - Explore - Explain -
Elaborate - Evaluate**



PROCESS SKILLS - Science as Inquiry

OBSERVE

INFER

Measure

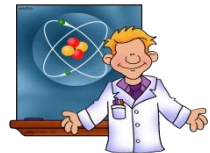
COMMUNICATE

CLASSIFY

COURSE OBJECTIVES

KNOWLEDGE SKILLS

- Compares and classifies states of matter
- Understands the relationship of atoms and elements
- Measures and represents data on a graph
- Investigate motion and forces, including simple machines
- Understand energy forms and transfers
- Learn how light interacts with objects
- Identify nutrition, exercise and rest needs
- Explore electricity and magnetism



Grading Expectations

Skill Assessments and
Projects **40%**

Labs, Science Notebook,
Class Participation and
Daily Work **60%**

100%

Grades on a 10 Point Scale

10 = Excellent! Exceeds expectations
9 = Great! Meets all expectations
8 = Good Job! Meets most expectations
7 = Does not meet most expectations
6 = Below grade level
5 = Corrections required
0 = incomplete

Percentages

100% - 90% = A
89% - 80% = B
79% - 70% = C
69% - 60% = D
59% - 50% = F



EXPECTATIONS

- Most work is completed in class since it involves the use of lab equipment and classroom resources.
- Work is kept in science notebooks that stay in the classroom.
- Science notebooks, flashcards, worksheets may go home to complete assignments or study for tests with the teacher's permission.



Attendance is Important!

- Class content comes from lab experiences and classroom activities



- Lab work often can not be sent home because of the equipment used

- Labs can be made up before or after school

When students miss a science class it is their *RESPONSIBILITY* to schedule make up labs and complete work within 1 or 2 days of their absence.

CLASSROOM

- Be Safe
- Be Respectful
- Be Responsible
- Make Smart Choices

RULES



LAB

- Follow instructions carefully
- Handle equipment responsibly
- Cooperate with lab partner
- Talk in low/soft voices
- Clean up work station when done



- Think as a scientist...***
- Record as a scientist... and***
- Reflect as a scientist!***

Contact Information

School phone 284-6270 - ext. # 325

Email – dwhilloc@newton.k12.ks.us

Infinite Campus Portal -<http://www.newton.k12.ks.us/sch/sf/index.htm>